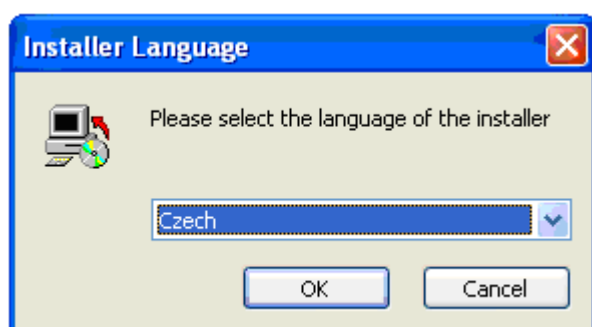
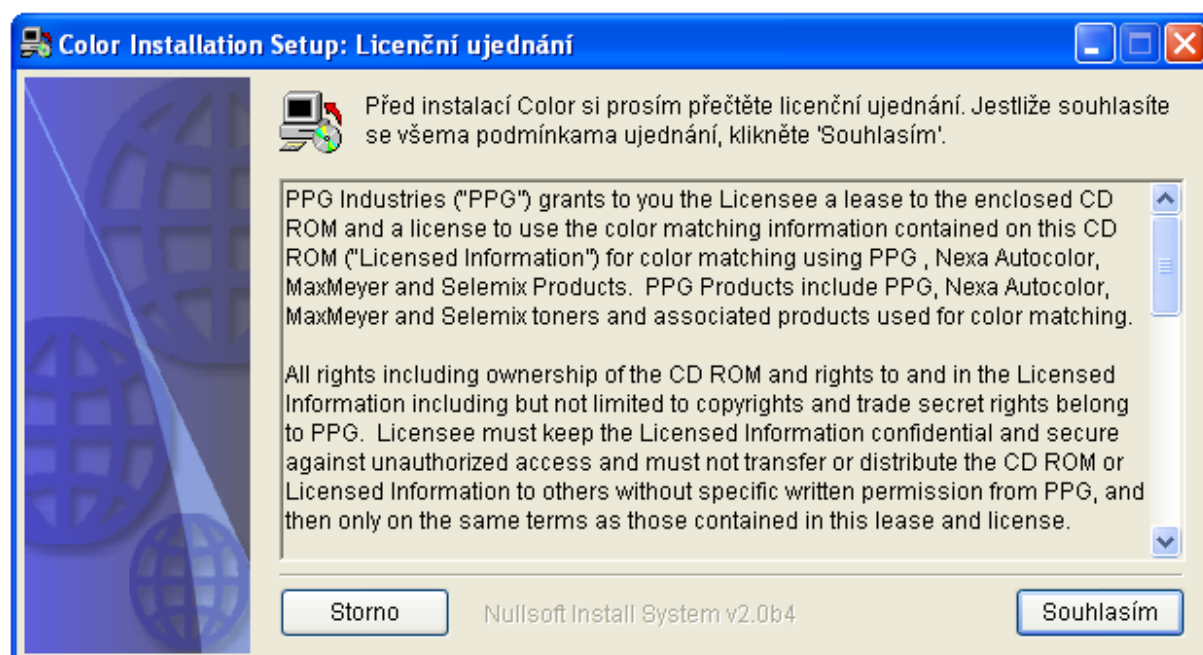


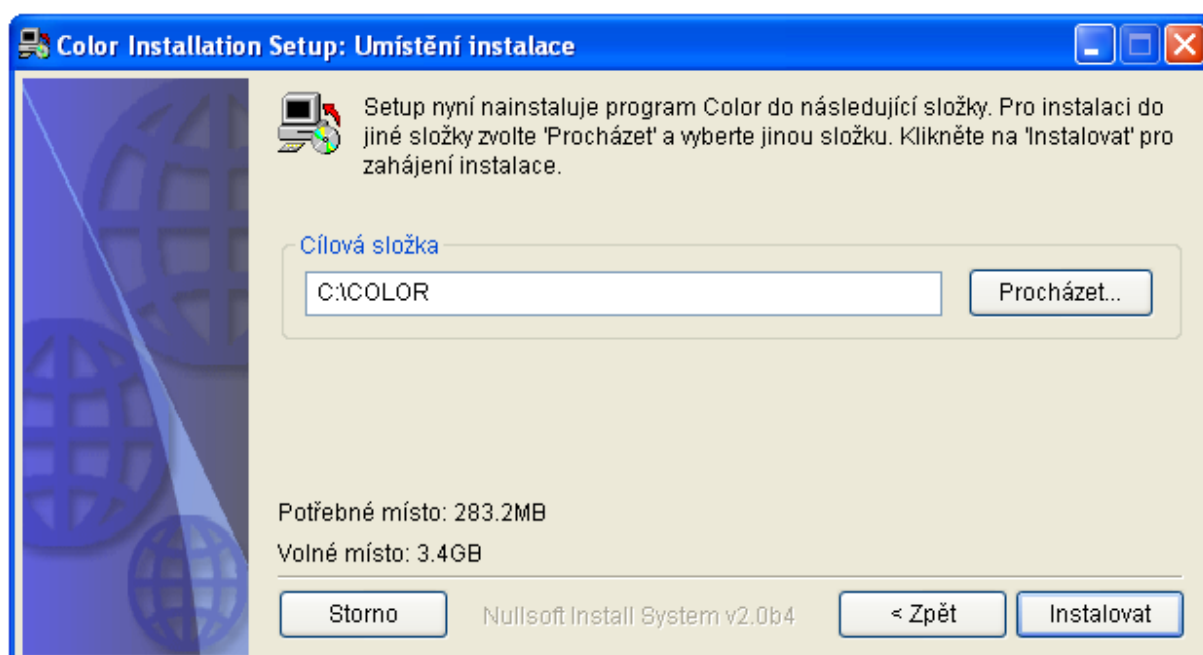
Do CD mechaniky vložte aktualizací CD.



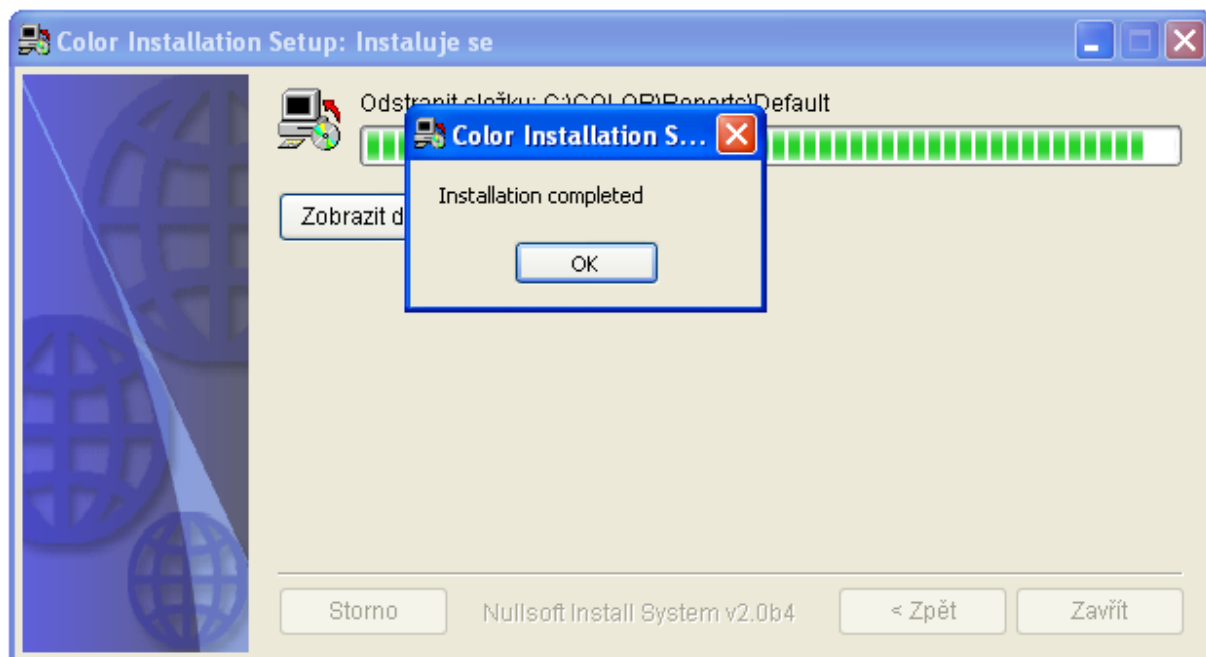
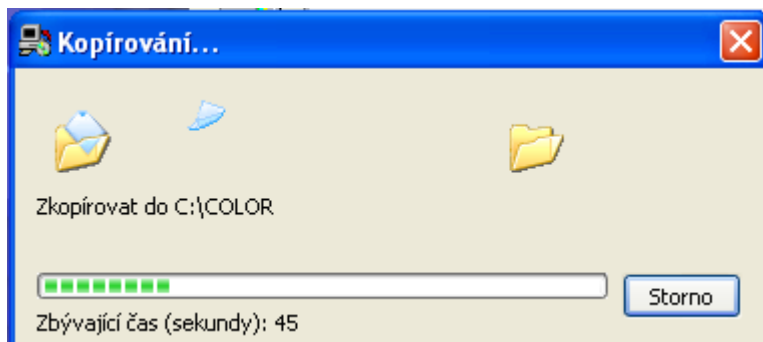
Klikněte na tlačítko „OK“.



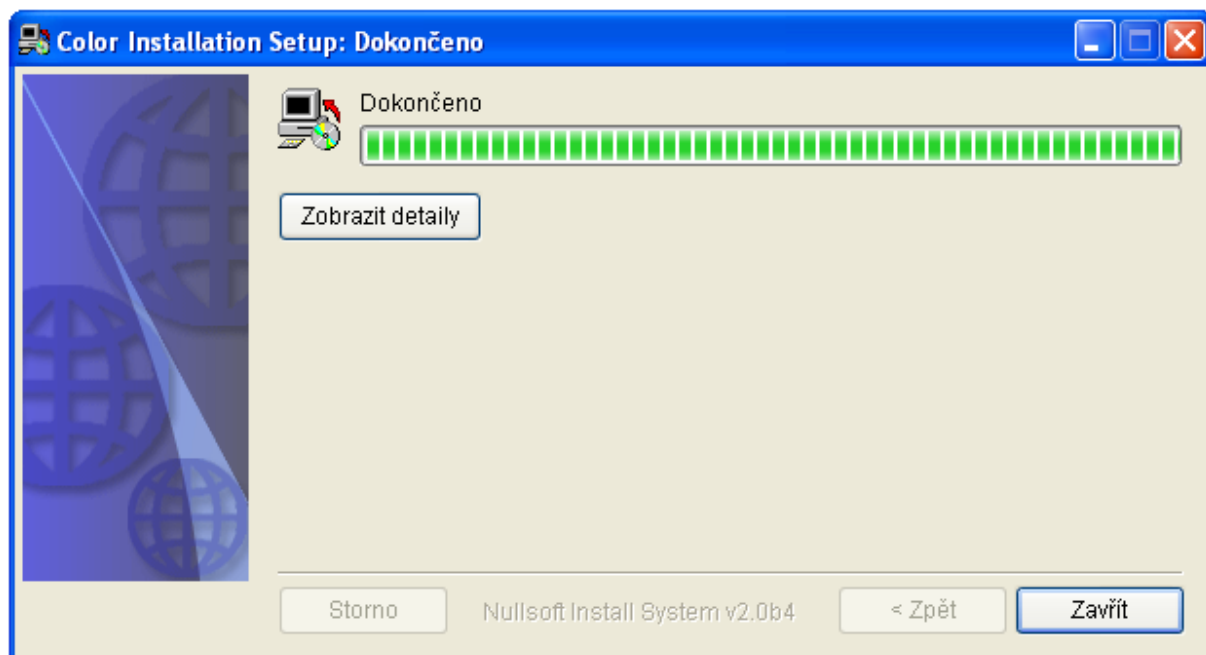
Klikněte na tlačítko „Souhlasím“.



Klikněte na tlačítko „Instalovat“.



Klikněte na tlačítko „OK“.



Klikněte na tlačítko „Zavřít“.  
Instalace je dokončena.